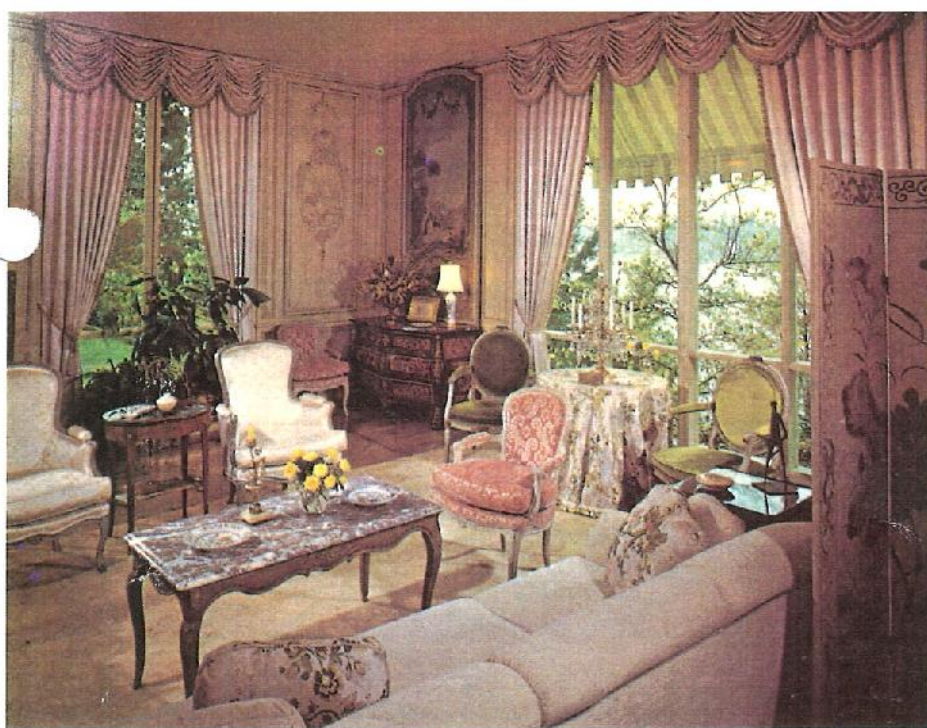


Within the Tacoma Country and Golf Club
Tacoma, Washington

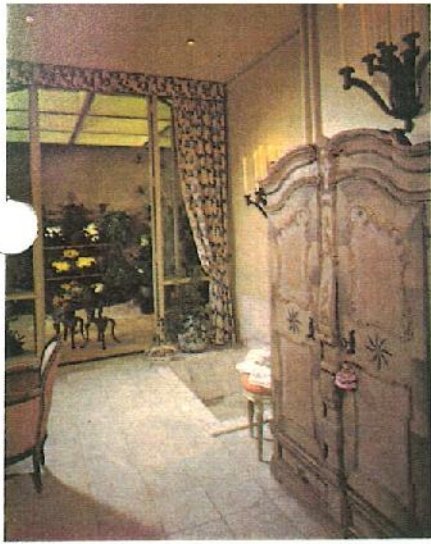


Eleven rooms, each with a touch of French elegance

Although a purely contemporary design, the house has an intriguing sense of the style and grace of the *ancien régime*. This is beautifully expressed in the living room by Louis XVI paneling with medallions depicting the arts, and by an antique French fireplace. Ceiling-high windows and doors recall the splendor of Versailles.

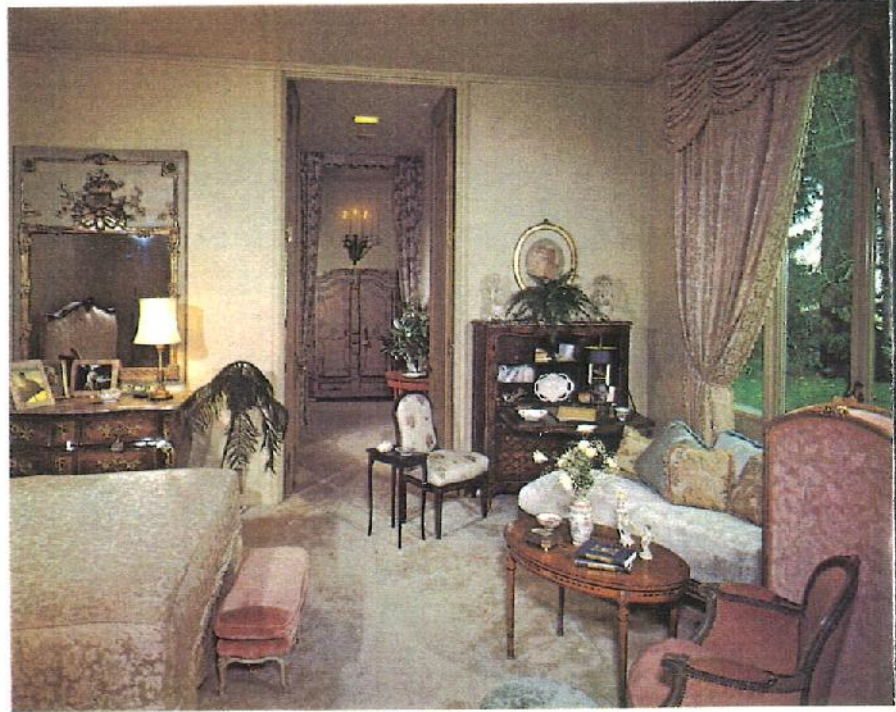
The living room has a marvelous lake view, opens to the terrace





Master bath
has sunken marble tub,
a terrarium beyond

The master bedroom, a private terrace at right



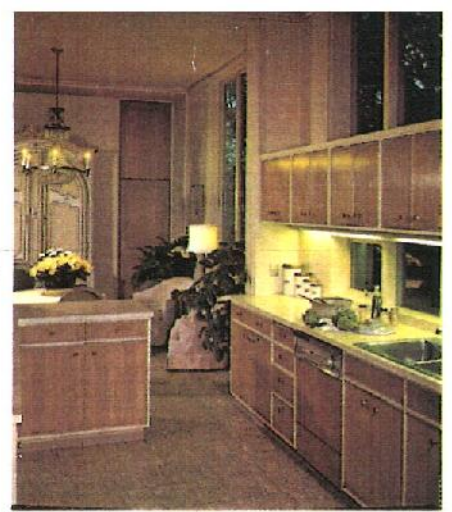
With space and airiness in other rooms, the library has a mood of intimacy, privacy, within bleached oak walls.

The master suite, also, has privacy. Alluring innovations in its wing are a sunken tub, a skylighted sun garden, a steam shower, a sauna, two dressing rooms. Three children's rooms are in another wing, with a cottage for guests, and a garage apartment for guests or staff.

A room of warmth and charm, the oval library



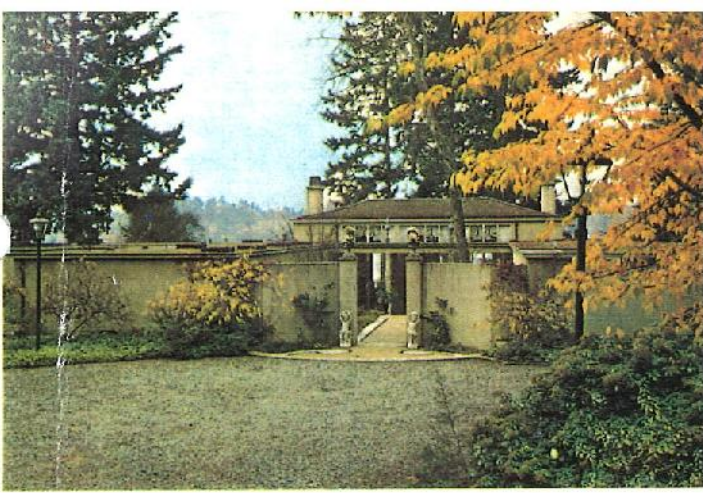
Kitchen
and breakfast
room get
morning sun



The dining room is a beautiful setting for formal dinners, and there is an enticing choice of places for buffets and informal meals. The family might prefer the sunny breakfast room just off the kitchen; it has a fireplace of old brick, a huge china closet. A downstairs playroom can handle a teen-ager's whole crowd.

The dining room has its own lake view





A classic French entrance courtyard

TABLE OF FACTS

LOCATION: Tacoma Country and Golf Club, Tacoma, Pierce County, Wash. Prestigious, limited golf club, with championship course, large clubhouse, residential community adjoining fairways open to members only. Tacoma, 12 miles via Freeway, is progressive lumber, manufacturing and seaport city, on Puget Sound which offers many water sports, sailing, boating, fishing. Seattle, 45 min. Olympic Natl. Forest, 1 hour; ski areas, 1 hour; Mount Rainier, 1 hour. Shopping center, 3 miles; grade school, 3½ miles; junior and senior high schools, each 3 miles; private school, 6 miles.

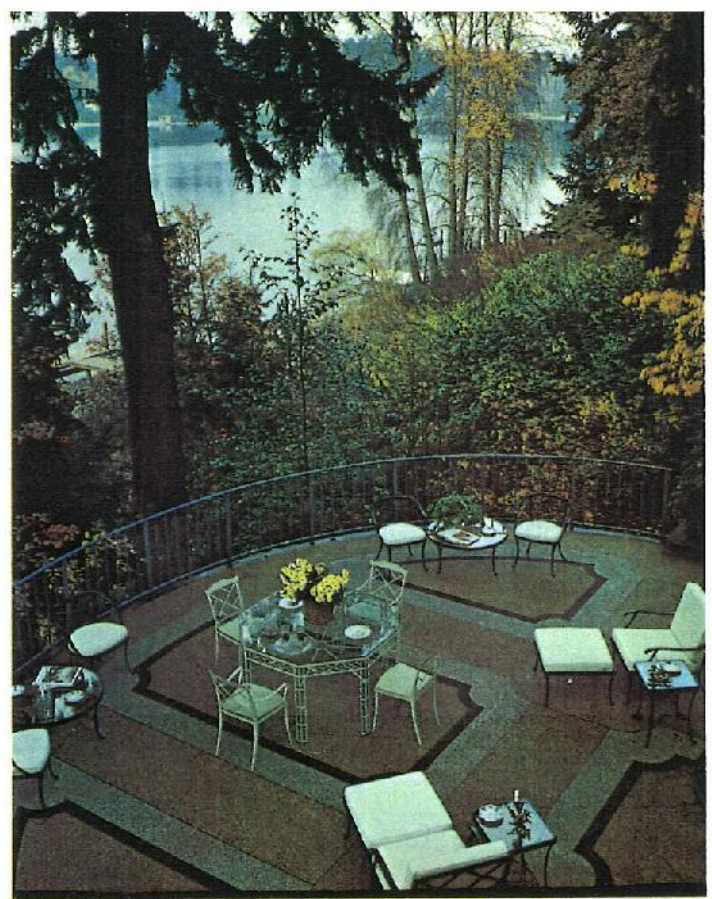
ZONING: Residential.

PROPERTY: Approx. 1 acre. Grounds designed by Thomas Church, landscape architect of San Francisco. Natural woodland with variety of pines and more than 4 varieties of dogwoods, spectacular display of hybrid rhododendrons and every type of fruit tree available to this region. Fantastically beautiful night-lighting on tall douglas firs. Private drive; large aggregate parking court; walkway to residence flanked by plantings.

LAKE FRONTAGE: 134' frontage on American Lake. Natural beach. Boat dock. From below house to the beach a waterfall flows into 4 pools rimmed by natural rock from eastern Washington; pumping system uses lake water for waterfall and for zoned sprinkler system throughout grounds.

RESIDENCE: 11 rooms (4 bedrooms, 4½ baths; maid's room, 1½ baths). 5600 sq. ft. Roland Terry, A.I.A., Seattle, architect; Richard Wegner, builder; Joan Briton Inc., New York, decorator. Built 1964; perfect condition. Concrete foundation, frame and stucco construction, tile roof, rockwool insulation. 10 French doors 10½' high, framed in steel; 8 double oak doors. All fireplaces are carved antiques with pull-down screens. Copper plumbing. Sherle Wagner basin fixtures. Four gas furnaces, individual thermostats. Two 100-gallon gas water heaters. Two septic tanks. PS utilities.

ROOMS (All room dimensions are approximate): LANAI-LIVING ROOM (40' x 24'), 15' 5" ceiling, travertine and marble floor, fireplace of marble with gas jets, stereo jacks, entrance wall and rear wall of glass panels, doors to lakeview TERRACE (38' x 30'), aggregate terrazzo paving, enormous douglas fir growing up from lower well, steel railing, steps down to walks to lakeshore. On right, DINING ROOM (23' x 16' 9"), 13' 5" ceiling, bleached oak floor, glass doors to lakeside Terrace. BREAKFAST ROOM (15' x 11½'), fireplace of old brick, fitted china closet. KITCHEN (14' 9" x 11'), vinyl floor, bleached oak cabinets, Formica counters, double s/s sinks, disposal, dishwasher, refrigerator, cook-top with exhaust, 2 wall ovens, master station for intercom and gate control, closet for canned goods. Lavatory. UTILITY ROOM (9½' x 11½'), freezer, ice-maker, washer, dryer, s/s laundry sink, master controls for electronic air clear and 4 furnaces, service entrance. Rear Hall to lanai,



The great terrace in the trees, the dock below

double steel doors to entrance court; also doors to garage and MAID'S ROOM (18' 9" x 13'), outside door; Bath. On left, from lanai, LIVING ROOM (16' 9" x 24'), Louis XVI paneling, marble fireplace with mirror over mantel, concealed wood storage, lake-view window, door to terrace. Oval LIBRARY (18½' x 15'), bleached oak paneling and shelves, bronze-accented marble fireplace, concealed TV cabinet, stereo controls, record player and file cabinet. Skylighted Hall; Wet Bar with refrigerator; Powder Room, light green onyx vanity, antique flowered urinal, toilet.

MASTER BEDROOM (19½' x 15'), carpeted, windows and doors overlooking lake and private Terrace; Linen Closet; closet-lined Dressing Room; Toilet Room; Bathroom, marble floor, marble vanity with basin, sunken marble tub, doors to TERRARIUM (14½' x 11'); terrazzo paving, marble chip planter area, trellised skylight, cabinets for plant supplies, door to lawn; 2nd DRESSING ROOM, wall of cedar closets and drawers, mosaic tile floor, mosaic tile vanity with basin, oversize shower with steam unit; large SAUNA. Carpeted, skylighted Hall to BEDROOM (14' x 16'); private Bath. Two BEDROOMS (14' x 16' and 14' x 22'); connecting Dressing Room, 3 double closets; Bath, mosaic tile floor, twin basins.

BASEMENT: PLAYROOM (40' x 24'), paneled, vinyl floor, pool table, 3-couch seating, outlets for TV and stereo, music box. Bathroom. Two STORAGE ROOMS, doors to grounds, can be converted to add'l living quarters. Two Furnace Rooms.

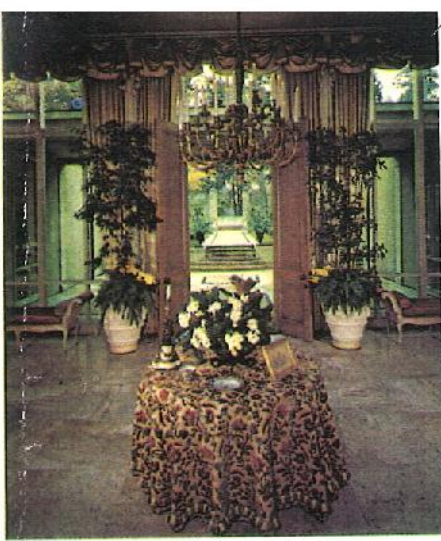
Attached 2-car GARAGE, 3 storage lockers, electronic doors; outer trellised Motor Court.

Separate 2-car GARAGE: 1st Floor: garage. Apt.: Bedroom, Bath, Utility. 2nd Floor: Living Room, Sitting Room, Bedroom, Bath, Kitchen.

One-Room GUEST COTTAGE, Bath.

TAXES: \$3,884.31 (1974).

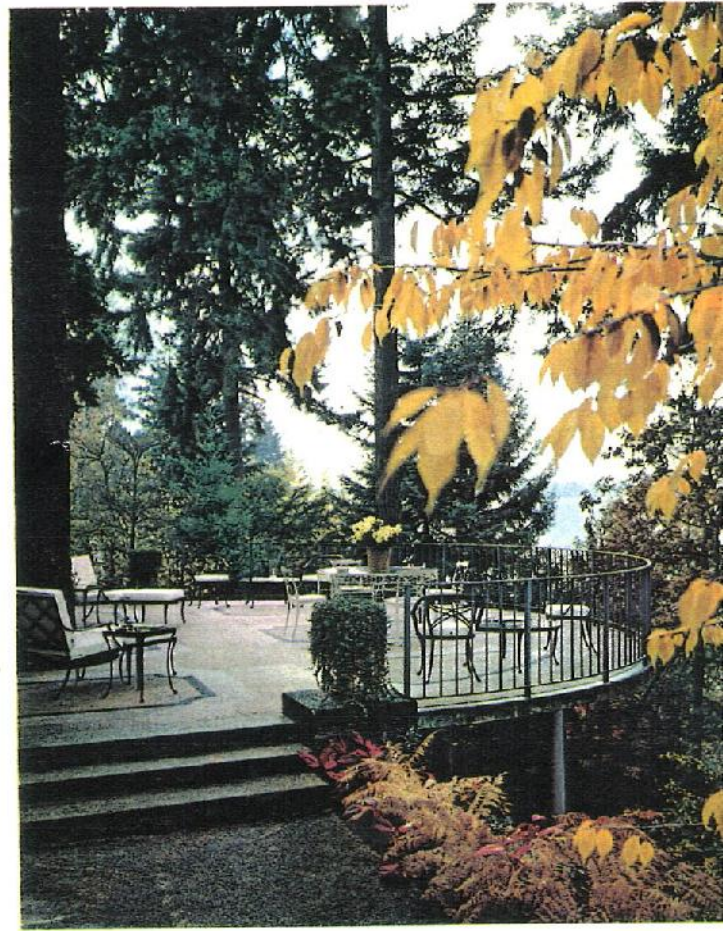
MORTGAGE: Free and Clear.



From the lanai,
the entrance
court and walk

A glorious site on American Lake

Protected within the grounds of America's second oldest golf club, this superb home and its garden of dogwoods, azaleas and rhododendrons overlook fairway and lake alike. The walkway and the entrance court of multi-colored terrazzo is reminiscent of a Loire chateau. From the courtyard, one enters the central lanai-living room. This marble and terrazzo paved room, over 15 feet high and 40 feet long, in turn opens to a huge terrace suspended in the trees. A fabulous party setting indeed.



Below the terrace, waterfalls cascade to the lake

Perfect for entertaining, the lanai connects to all main areas

